

CORDLESS LEAF BLOWER

Rocwood

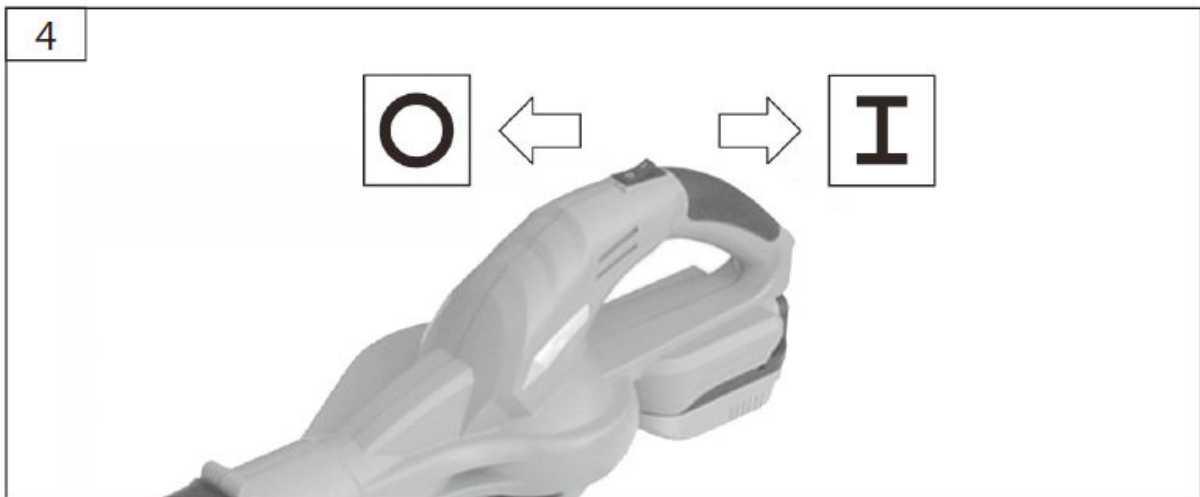
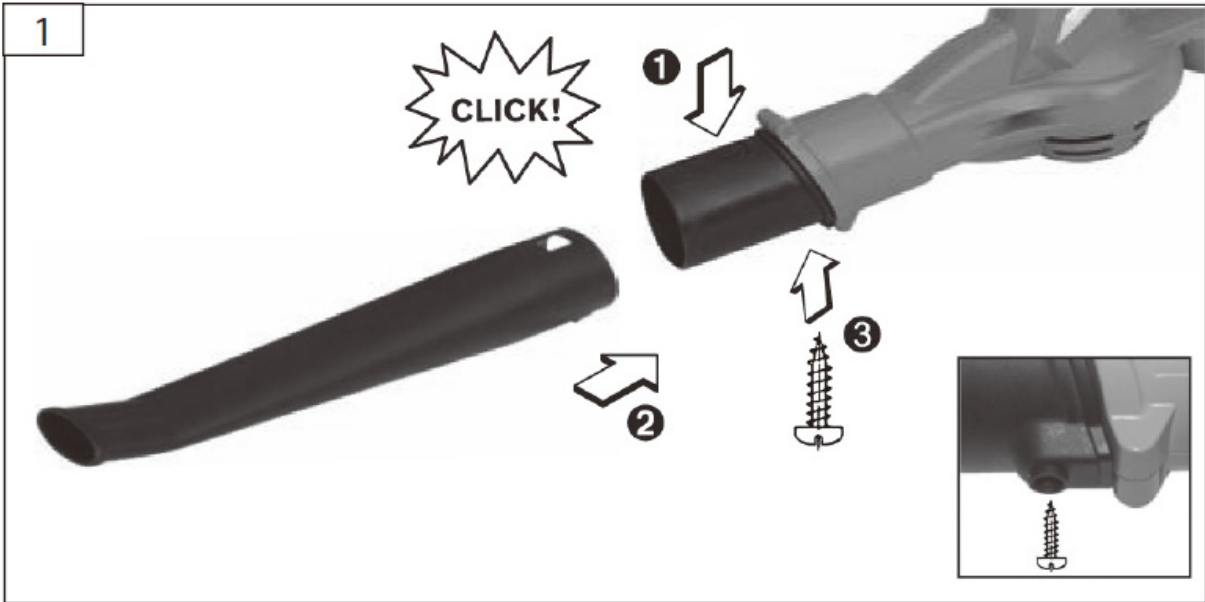


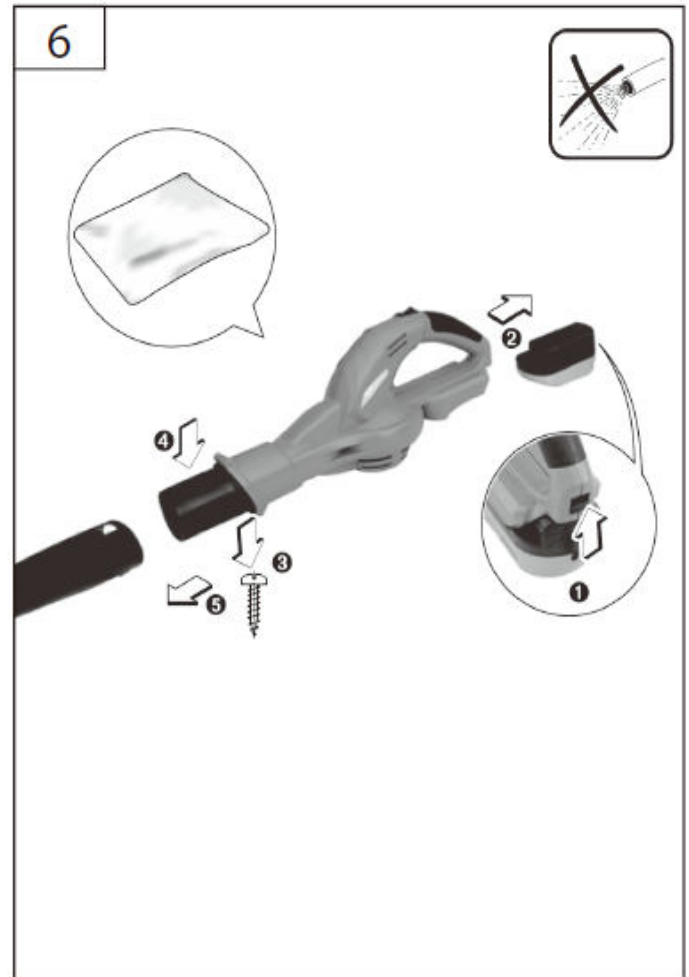
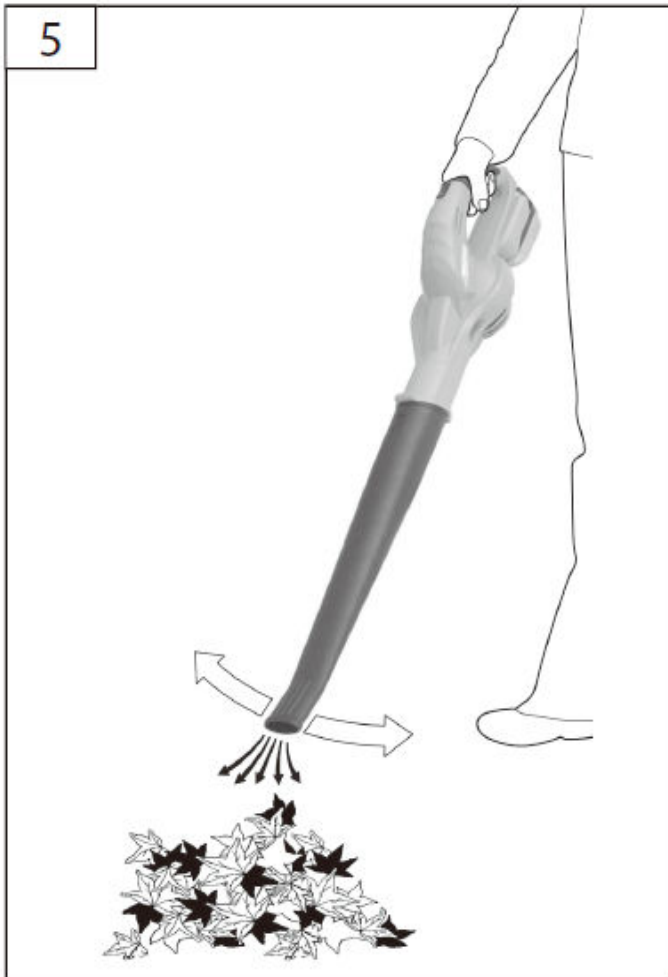
INSTRUCTION MANUAL



RWBL20

WWW.ROCWOOD.CO.UK





INTENDED USE

The leaf blower has been designed to blow dry leaves and light garden waste, e.g. dry grass, twigs of spruces and pines. The appliance should only be used for this purpose. The manufacturer cannot be held liable for any damage if these Operating Instructions are not followed.

INTRODUCTION

Carefully read and understand these Operating Instructions before you begin to use the appliance. Ensure you follow all safety instructions given.

Behave responsibly towards other persons at all times when using the appliance.

If you have any questions or concerns regarding the appliance connection and operation, please contact your customer service representative.

SAFETY INSTRUCTIONS

This appliance has not been designed to be used by children or by persons with limited physical, sensory and mental skills, or with insufficient experience or knowledge. Children must be supervised to make sure they do not play with the appliance. Keep the appliance away from children and unauthorized persons at all times.

Do not expose the appliance to rain and do not use it in wet or moist conditions.

Check the voltage. Technical specifications given on the type label must match the details of the electrical network to which the charger is connected. Protect the cable against excess temperatures, oil and sharp edges. To minimize any risk, any damaged electric cables must be replaced by the manufacturer. Do not

attempt to repair these yourself. Take the battery out before cleaning or repairing the leaf blower.

The operator is responsible for third party use of the leaf blower and any injuries and/or damage caused.

The leaf blower should be used in broad daylight or under good artificial lighting only.

Do not use the leaf blower when barefooted or wearing only light sandals. Solid shoes and long trousers should be worn at all times. Make sure no items such as loose clothing, chains, hair, etc. can be pulled into the air supply opening.



The appliance should be used only with the nozzle fitted

Bystanders and animals should be kept in a safe distance from the garden appliance. Thrown-off items may lead to injuries. Never blow any dirt/leaves towards any persons or animals.

When using the leaf blower, keep it at least 3 cm above the ground at all times. Do not blow hot, flammable or explosive materials.

Do not put your feet, hands, etc. near to the rotating fan openings. Protective glasses should be worn whenever working with the leaf blower.

Do not make any modifications to the garden appliance. Any unauthorized changes may affect the safety of your garden appliance and/or lead to increased noise and vibrations.

Never open the battery. A defective battery should be professionally disposed of immediately (harmful liquids may leak if the battery is damaged).

IN CASE OF EMERGENCY

If an accident occurs, first control any hazards to protect yourself, any bystanders and the injured person from further injury. Apply first aid and get qualified medical assistance as quickly as possible. Reassure the injured person and keep them calm until help arrives.

Ask for an ambulance or other emergency services as necessary. When doing so, tell the operator:

1. Your name
2. Where you are – street number, street name, suburb and city
3. How the accident happened
4. How many people are injured
5. What types of injury or injuries there are.

If possible, send an uninjured bystander to meet emergency services when they arrive. If an accident occurs in a workplace, remember to restock your first aid after use and ensure you meet any accident reporting obligations.

TECHNICAL DATA

Battery	20 V / 2000mAh (Li-Ion)
Charging time	3 – 5 hours
Battery operation time	10-15min.
Protection class	III
Sound power level	93 dB

DESCRIPTION OF SYMBOLS

11



1. General instructions of risks
2. Read the Operating Instructions
3. Make sure bystanders do not get injured by thrown-off items.
4. Keep bystanders a safe distance from the appliance.
5. Rotating fan.
6. Do not put your hands, feet, etc. in the openings when the appliance is running.
7. Make sure bystanders are a safe distance from the work area to ensure they are not injured by debris thrown by the garden appliance.
8. Protective glasses should be worn.
9. Take out the battery before any cleaning or adjusting of the appliance, or leaving it unused for an extended period of time.
10. Do not work in wet weather. Do not store the leaf blower in a location exposed to rain.
11. Storage temperature 10-40°C. Never place the battery into liquids. Battery should be stored fully charged only.

OPERATOR REQUIREMENTS

The operator must carefully read and understand the Operating Instructions before using the appliance.

Qualification / Training: No special qualification or training is necessary for using the appliance. Using the appliance only requires appropriate instructions by a professional or reading the Operating Instructions. No special training is necessary.

Minimum age: The appliance should only be operated by persons over 18 years of age. The exception to this is young people operating the appliance as part of their education or training and doing so under a competent trainer's close supervision.

CHARGING INSTRUCTIONS

Do not use any other charger. The charger included has been adapted to the Li-Ion battery inside the leaf blower.

Note the system voltage. The current source voltage must match the details on the type label of the charger.

Caution: The battery is supplied partially charged. To provide full performance of the battery, charge the battery completely with the charger before using the leaf blower for the first time.

To charge the battery

1. Take the battery out of the leaf blower by pressing the release button.
2. Insert the battery into the charger and plug the charger electric cable into a power socket. The red light on the charger will turn on to indicate charging is underway.
3. The charger will stop charging once the battery is fully charged (after approximately 3-5 hours). The green lights will come on when the battery is charged. Once fully charged, switch off the power source and remove the battery from the charger.
4. The charger may become warm when charging, this is normal and does not indicate a fault with the charger.



The charger recognizes the battery charging state and the battery is always charged by the optimum charging current, according to the temperature and voltage. This gives smoother charging to the battery and ensures that it stays fully charged when kept on the charger.

The Li-Ion battery may be charged at any time without the service life being shortened as a result. Charging interruption does not damage the battery.

Caution: Charging is only possible when the battery temperature is within the correct temperature range. See the instructions on the battery.

The charger may become warm when used continuously or for consecutive charging cycles with no interruption. This is normal and does not indicate a technical defect of the charger.

A significantly shortened operation time after charging indicates that the battery is worn out and it must be replaced.

The Li-Ion battery is protected against deep discharge by Electronic Cell Protection (ECP). This means that the garden appliance will switch off when the battery is discharged.



Do not press the on/Off button when the garden appliance automatically switches off due to battery discharge. Continuing to press the button may damage the battery.

The leaf blower continues to run down after being switched off (continuous air flow). Let the engine run down and then start it again. Do not switch the garden appliance off and on in rapid succession.

CLEANING AND STORAGE



Remove the battery from the product before storage.

To clean the exterior of the machine, use a soft brush and cloth. Do not use water, solvents or polishes.

Regularly remove all debris from the exterior, especially from the ventilation slots.

Charge the battery fully 3-5 hours before storing.

During storage, charge the battery at least once every three months to protect it from damage.

Store the machine in a dry, secure place out of reach of children.

Do not place any other objects on top of the machine.

The machine must not be stored over 40°C or under direct exposure to sunlight.

Do not store the machine in places with static electricity.

When the battery pack is not in use, keep it away from other metal objects like paper clips, coins, keys, nails, screws, or other small metal objects that can make a connection from one terminal to another. Shorting the battery terminals together may cause burns or a fire.



Waste electrical products should not be disposed of with household waste. Please recycle where facilities exist. Check with your Local Authority or retailer for recycling advice.



This product contains a lithium-ion battery. Do not dispose of battery packs/batteries into household waste, water or fire. Battery packs/batteries must be collected, recycled or disposed of in an environmentally friendly way. Please dispose of them properly at a public recycling facility.

Due to continuous product improvement, the manufacturer reserves the right to change the product specification without prior notice. Colours and contents may vary.